

# SCHNEIDER SW E-PANEL



The **SW E-Panel** is for a single Schneider Electric Conext SW inverter/charger. The SW inverter is mounted directly to the right of the E-Panel. Available with the 175 amp breaker (MNE175SW) for the SW2524 or the SW4048 or with the 250 amp breaker (MNE250SW) for the SW4024. Save some money over the price of the Schneider Electric distribution panel and get additional features.

There are Inverter battery breaker knockouts for up to 6 din rail mount AC or DC breakers (or the optional Bypass Kit) and 4 panel mount locations for dc breakers including Ground Fault breakers if needed.

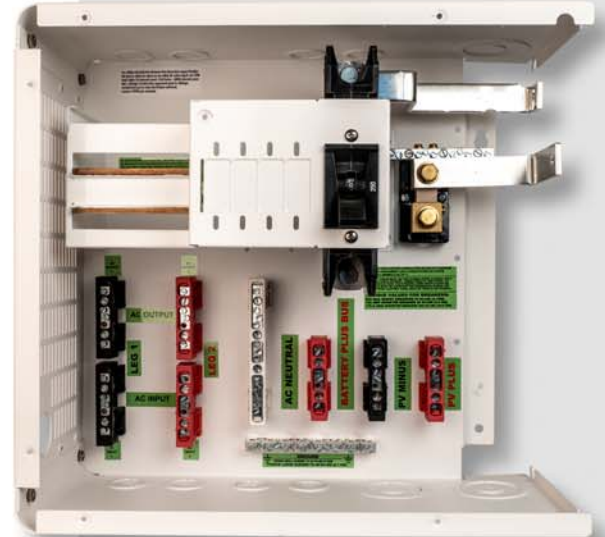
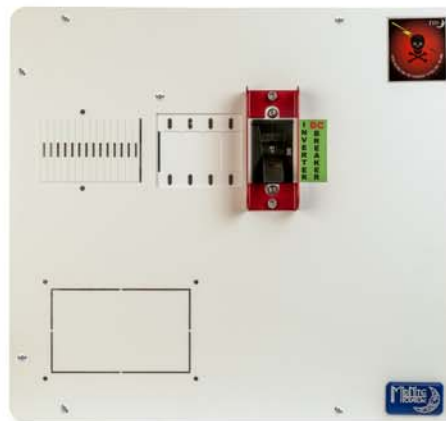
Massive tin plated copper bus bars directly connect to the SW's battery terminal. Bus bars for AC inputs, AC output, neutral, ground, PV + in, PV- in, Bat +, Bat- and 500 amp shunt.

There is a location to mount 2 Charge controllers to the top.

Also available is a left side charge controller bracket for mounting Classic MPPTs.

## PRODUCT FEATURES

- Main Breaker Current Rating - 250
- Number of spaces - 10
- Environmental Rating - Type 1 (Indoor)
- Max. Wire Size - 4/0 AWG
- Max. AC Voltage - 240VAC
- Max. DC Voltage - 300VDC
- Warranty - 5 yrs.
- Listed by ETL for US & Canada
- Built in Arlington, WA USA



- \* **COMPACT:** Smaller size takes up less wall space
- \* **MORE SLOTS:** Six din rail and four panel mount breaker slots for PV, Wind, Hydro and AC or DC distribution.
- \* **HARDWARE:** Hardware included to mount to the inverter and wall mounting brackets included. Screws for connection to wall not included.
- \* **AGENCY APPROVALS:** ETL listed to US and Canadian standards and NEC compliance eases Electrical inspector concerns
- \* **INVERTER:** Inverter battery breaker and inverter cables included

*Made in the  
USA!*

# SCHNEIDER SW E-PANEL



## Circuit breakers available to customize your system:

CHARGE CONTROLLER BREAKERS

DINRAIL:

MNEPV 40, 50, 60, 63, 80 & 100 VDC

MNEPV 50-300 - 300 VDC

PANEL MOUNT:

MNEDC 60, 70, 80, 90, & 100 – 125 VDC

DC-GFP ASSEMBLIES

MNDC-GFP63 Dinrail 150 VDC

MNDC-GFP50-300 Dinrail 300 VDC

MNDC-GFP80 Dinrail 125 VDC

DC LOAD/PV COMBINER BREAKERS

MNEPV 1, 2, 3, 4, 5, 6, 7, 8, 9, 10, 12, 15, 20, 30, 40, 50,  
63, 80, 100

150 VDC Dinrail

MNEPV 07, 10, 12, 15, 20, 30, 50–300 VDC Dinrail

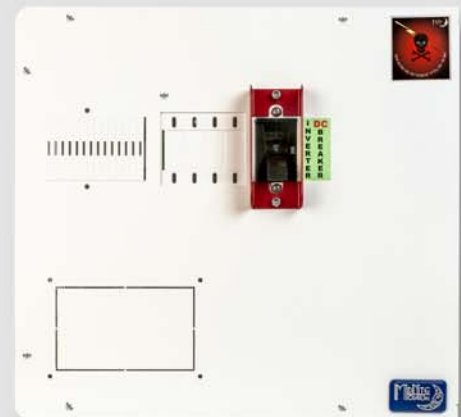
AC LOAD BREAKERS

SINGLE POLE 120 VAC: 10, 15, 20 Amp

SINGLE POLE 120-277 VAC: 30, 40, 50, 60 Amp

TWO POLE 120/240 VAC 20, 30, 50, 60

\*NOTE: See current price list for individual part numbers



**KEEPING JOBS IN  
AMERICA!**